

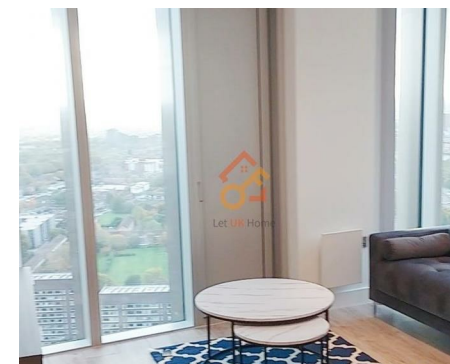
Let **UK** Home

2 Bedrooms

Flat

**Located
in Manchester**

£2,300 Per Month



padmin@letukhome.co.uk

<https://www.letukhome.co.uk/>

01615219812



15 Silvercroft Street Manchester

M15 4XL



Let UK Home are delighted to offer this stunning two bedroom apartment in The Blade situated in the heart of New Jackson, a world class skyscraper district located at the Southern Gateway to Manchester City Centre, offering breathtaking views of the city centre.

This property comprises a large bright open plan kitchen and living room, two double bedrooms with wardrobes (master en-suite), a large family sized bathroom and ample storage. Additionally, a parking space is available to rent at an additional cost of £150 per calendar month.

The residents of this development will benefit from a state-of-the-art gymnasium, infrared sauna, spin studio, yoga studio, residents' lounge, private dining suite, as well as a co-working space. Externally, there is a private rooftop terrace and a beautiful park at ground level. The commercial unit also offers the opportunity for shops, cafes and restaurants.

Those living at the Blade will find themselves at the heart of one of the world's most culturally diverse cities, with a number of Manchester's most popular attractions right on their doorstep. This includes: St John's Culture and Enterprise Quarter, Castlefield Urban Heritage Park, Manchester Opera House, HOME at First Street. In addition, the development is adjacent to three universities in Manchester: The University of Manchester, Manchester Metropolitan University and the Royal Northern College of Music.

The development offers a wealth of nearby transport connections, so residents can

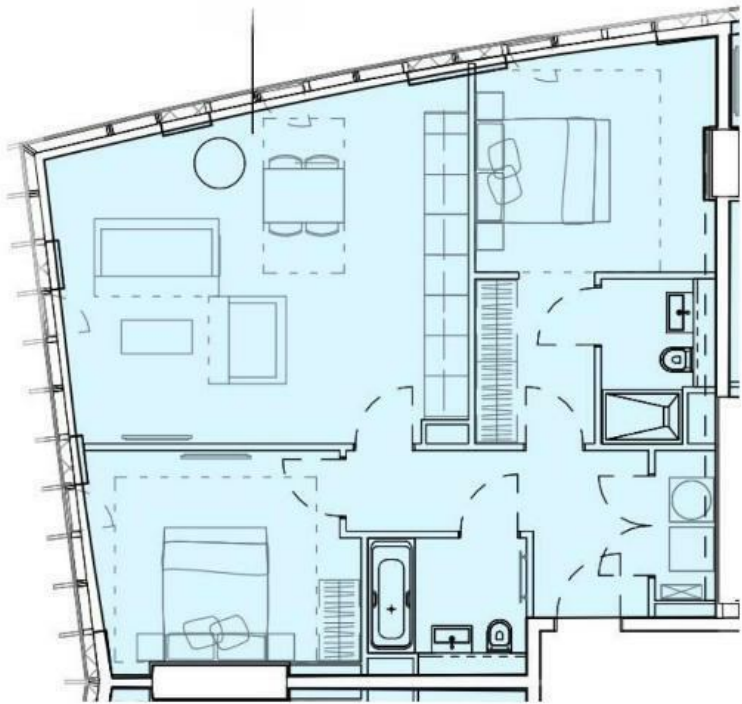
15 Silvercroft Street Manchester

£2,300 Per Month



- 39th Floor
- 24h Security
- The Gym
- Rooftop Terrace
- EPC Rating: B
- Concierge Service
- Private Dining Room
- Sauna & Steam Room
- Residents Lounge
- Parking space available at an additional cost





Total floor area

83 square metres



Let **UK** Home

1/F, St James Tower 7 Charlotte
Street
Manchester
M1 4DZ

01615219812

pmadmin@letukhome.co.uk

Council Tax Band: D

Local Authority:

Agents Note: Whilst every care has been taken to prepare these particulars, they are for guidance purposes only. All measurements are approximate and are for general guidance purposes only and whilst every care has been taken to ensure their accuracy, they should not be relied upon and potential buyers/tenants are advised to recheck the measurements.

Energy Efficiency Rating		Current	Potential
Very energy efficient - lower running costs			
(92 plus) A			
(81-91) B		85	85
(69-80) C			
(55-68) D			
(39-54) E			
(21-38) F			
(1-20) G			
Not energy efficient - higher running costs			
England & Wales	EU Directive 2002/91/EC		

<https://www.letukhome.co.uk/>